

DETTAGLI

- 2 tasche
- 1 tasca sul retro
- Elastico e coulisse
- Chiusura zip

COLORE

618 Gessato nero
G119 Gessato grigio
G004 Gessato blu
01 Gessato bordeaux

TESSUTO

70% cotone
30% poliestere
145 g / m²

TAGLIE

XS ÷ 5XL
Regular Fit



Le misure indicate si riferiscono alle taglie **S** per i capi femminili, **L** per i capi maschili. Per i capi a taglia unica le misure indicate sono effettive.

Pantalone dalla vestibilità regular e taglio trendy, realizzato in elegante tessuto gessato dalla mano morbida e resistente al candeggio. Fascione con coulisse, due tasche sui fianchi e piccola tasca posteriore.

COLORI DISPONIBILI



618 Gessato nero



G119 Gessato grigio

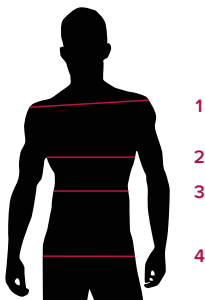


G004 Gessato blu



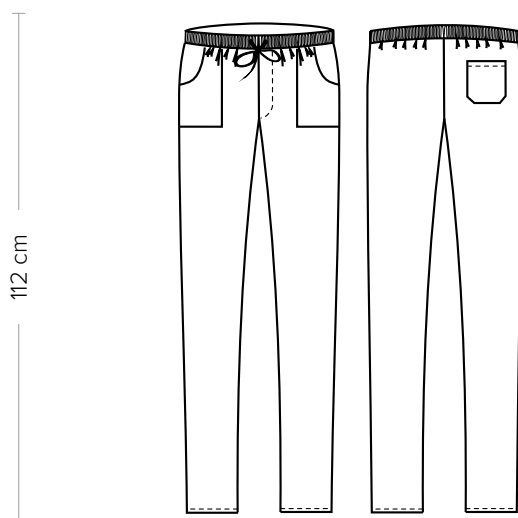
01 Gessato bordeaux

TABELLE TAGLIE
E CORRESPONDENZE



| TABELLA ST-P3 REGULAR FIT | | | | | | | | | | |
|---------------------------|-------|--------|---------|---------|---------|---------|---------|---------|---------|---------|
| TAGLIA | XXS | XS | S | M | L | XL | XXL | XXXL | 4XL | 5XL |
| 1 - SPALLE | | | | | | | | | | |
| 2 - TORACE | | | | | | | | | | |
| 3 - VITA | 67-71 | 72-76 | 77-81 | 82-86 | 87-91 | 92-97 | 98-104 | 105-111 | 112-118 | 119-125 |
| 4 - BACINO | 92-96 | 97-101 | 102-105 | 106-109 | 110-113 | 114-119 | 120-126 | 127-132 | 133-138 | 139-144 |

GUIDA ALLE TAGLIE **1)** Prendere le misure anatomiche (corpo con abbigliamento intimo) senza stringere mantenendo ben teso il metro. Nota: nel caso vogliate indossare dei camici già con dell'abbigliamento sotto prendete le misure già abbigliati. **2)** Nel caso tra le misure prese vi fosse una misura a cavallo fra 2 taglie vi consigliamo di prendere quella più grande. **3)** Le misure della tabella sono espresse in centimetri.



DETAILS

- 2 pockets
- 1 rear pocket
- Elasticated waistband with drawstring
- Zip fly

COLOURS

618 Black
G119 Grey
G004 Blue
01 Burgundy

FABRIC

70% cotone
30% poliestere
145 g / m²

SIZES

XS ÷ 5XL
Regular Fit



The measures indicated refer to sizes **S** for women, **L** for men. For one-size-fits-all garments, the measurements indicated are effective.

Pants with a regular fit and a trendy cut, made of an elegant soft pinstripe fabric and resistant to bleaching. Waistband with drawstring, two side pockets and a little rear pocket.

AVAILABLE COLOURS



618 Black



G119 Grey

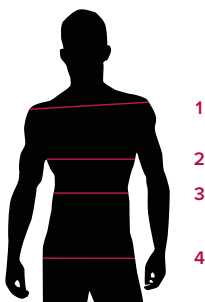


G004 Blue



01 Burgundy

SIZE TABLES AND CORRESPONDENCES



| TABLE ST-P3 REGULAR FIT | | | | | | | | | | |
|-------------------------|-------|--------|---------|---------|---------|---------|---------|---------|---------|---------|
| SIZE | XXS | XS | S | M | L | XL | XXL | XXXL | 4XL | 5XL |
| 1 - SHOULDERS | | | | | | | | | | |
| 2 - CHEST | | | | | | | | | | |
| 3 - WAIST | 67-71 | 72-76 | 77-81 | 82-86 | 87-91 | 92-97 | 98-104 | 105-111 | 112-118 | 119-125 |
| 4 - HIPS | 92-96 | 97-101 | 102-105 | 106-109 | 110-113 | 114-119 | 120-126 | 127-132 | 133-138 | 139-144 |

SIZE GUIDE **1)** Take the anatomical measurements (body with underwear) without tightening, keeping the measuring tape taut. Note: in case you want to wear of the gowns already with the clothing underneath take the measurements already dressed. **2)** If there is a measure between 2 sizes between the measurements taken, we advise you to take the bigger one. **3)** The measurements in the table are expressed in centimeters.