

#### DETTAGLI

- Manica lunga elastico al polso
- 3 tasche

#### TAGLIE

S ÷ XXL  
Regular Fit

#### COLORE

525 Avio

#### TESSUTO

65% poliestere  
35% cotone  
140 g / m<sup>2</sup>



Le misure indicate si riferiscono alle taglie **S** per i capi femminili, **L** per i capi maschili. Per i capi a taglia unica le misure indicate sono effettive.

#### COLORI DISPONIBILI



525 Avio

**TABELLE TAGLIE  
E CORRESPONDENZE**

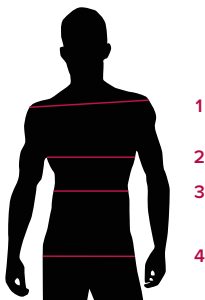
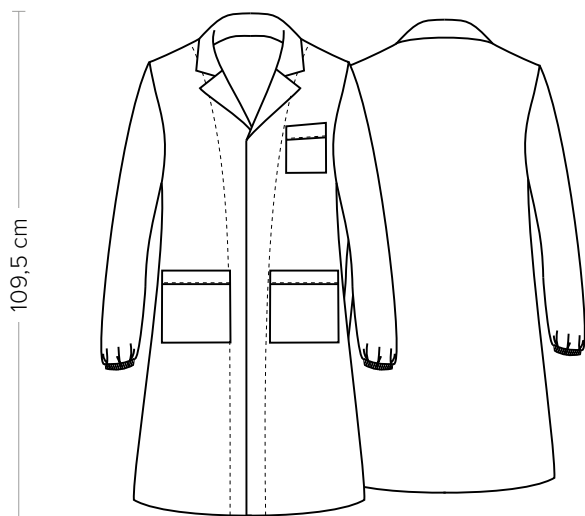


TABELLA ST-R7 REGULAR FIT								
TAGLIA	XS	S	M	L	XL	XXL	XXXL	4XL
1 - SPALLE								
2 - CIRCONFERENZA TORACE	90-100	100-105	106-110	111-115	116-122	123-129	130-137	138-148
3 - CIRCONFERENZA VITA	80-89	90-94	94-98	99-104	105-110	111-119	120-127	128-138
4 - CIRCONFERENZA BACINO	90-96	96-100	100-104	105-110	111-117	118-124	125-132	133-142

**GUIDA ALLE TAGLIE** **1)** Prendere le misure anatomiche (corpo con abbigliamento intimo) senza stringere mantenendo ben teso il metro. Nota: nel caso vogliate indossare dei camici già con dell'abbigliamento sotto prendete le misure già abbigliati. **2)** Nel caso tra le misure prese vi fosse una misura a cavallo fra 2 taglie vi consigliamo di prendere quella più grande. **3)** Le misure della tabella sono espresse in centimetri.



## DETAILS

- Cuff with elastic band
- 3 pockets

## COLOURS

525 Avio

## FABRIC

65% polyester  
35% cotton  
140 g / m<sup>2</sup>

## SIZES

S ÷ XXL  
Regular Fit



The measures indicated refer to sizes **S** for women, **L** for men. For one-size-fits-all garments, the measurements indicated are effective.

## AVAILABLE COLOURS



525 Avio

## SIZE TABLES AND CORRESPONDENCES

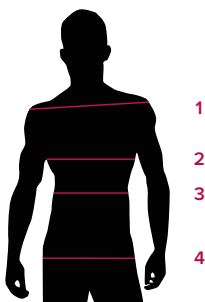


TABLE ST-R7 REGULAR FIT								
SIZE	XS	S	M	L	XL	XXL	XXXL	4XL
1 - SHOULDERS								
2 - CHEST CIRCUMFERENCE	90-100	100-105	106-110	111-115	116-122	123-129	130-137	138-148
3 - WAIST CIRCUMFERENCE	80-89	90-94	94-98	99-104	105-110	111-119	120-127	128-138
4 - HIPS CIRCUMFERENCE	90-96	96-100	100-104	105-110	111-117	118-124	125-132	133-142

**SIZE GUIDE** **1)** Take the anatomical measurements (body with underwear) without tightening, keeping the measuring tape taut. Note: in case you want to wear of the gowns already with the clothing underneath take the measurements already dressed. **2)** If there is a measure between 2 sizes between the measurements taken, we advise you to take the bigger one. **3)** The measurements in the table are expressed in centimeters.