

DETTAGLI

- Sfoderato
- 2 tasche
- 6 bottoni automatici
- Fascette regolabili

COLORE

322 Marrone

TESSUTO 1

55% viscosa
45% poliuretano
254 g / m²



TAGLIE

S ÷ XXXL
Regular Fit

Le misure indicate si riferiscono alle taglie **S** per i capi femminili, **L** per i capi maschili. Per i capi a taglia unica le misure indicate sono effettive.

Il Gilet Tyron è disegnato seguendo il filone steampunk, ed è perfetto per i concept pub in stile old england e le barberie moderne. Ha una vestibilità Slim Fit, 6 bottoni automatici in ottone anticato e un tessuto in finta pelle dalla facile manutenzione. Totalmente sfoderato, Tyron ha tagli ribattuti sul davanti e sul dietro, che gli conferiscono garbo e carattere.

COLORI DISPONIBILI



322 Marrone

**TABELLE TAGLIE
E CORRESPONDENZE**

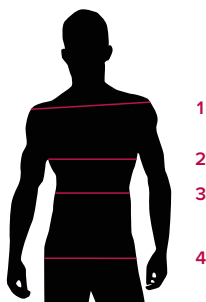


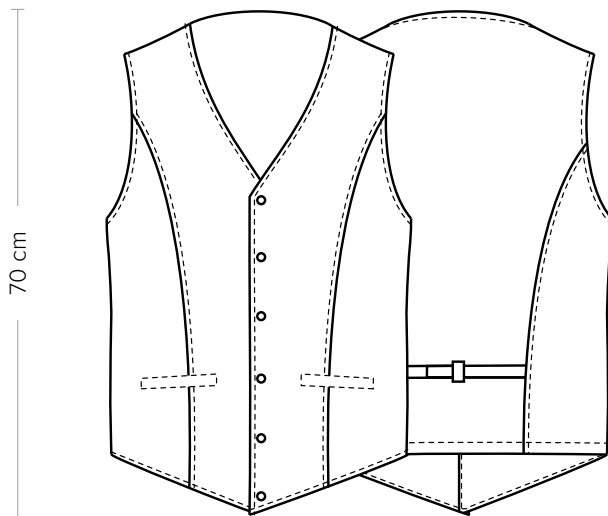
TABELLA ST-E3 REGULAR FIT							
TAGLIA	XS	S	M	L	XL	XXL	XXXL
1 - SPALLE	35	36	37	38	40	42	43
2 - CIRCONFERENZA TORACE	80-84	85-90	91-96	97-102	103-110	111-118	119-125
3 - CIRCONFERENZA VITA	99-83	84-89	90-95	96-100	101-108	109-116	117-124
4 - CIRCONFERENZA BACINO	99-83	84-89	90-95	96-100	101-108	109-116	117-124

GUIDA ALLE TAGLIE **1)** Prendere le misure anatomiche (corpo con abbigliamento intimo) senza stringere mantenendo ben teso il metro. Nota: nel caso vogliate indossare dei camici già con dell'abbigliamento sotto prendete le misure già abbigliati. **2)** Nel caso tra le misure prese vi fosse una misura a cavallo fra 2 taglie vi consigliamo di prendere quella più grande. **3)** Le misure della tabella sono espresse in centimetri.

TYRON

ITEM CODE
19P01E091

Giblor's
italian work/life specialist



DETAILS

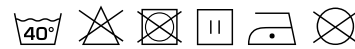
- Unlined
- 2 pockets
- 6 press studs
- Adjustable buckles

COLOURS

322 Brown

FABRIC 1

55% viscose
45% polyurethane
254 g / m²



SIZES

S ÷ XXXL
Regular Fit

The measures indicated refer to sizes **S** for women, **L** for men. For one-size-fits-all garments, the measurements indicated are effective.

The Tyron waistcoat is designed following the steampunk trend and it is perfect for Old England-style concept pubs and modern barbershops. It has a slim fit, 6 antique brass press studs and an easy-care imitation leather fabric. Totally unlined, Tyron has felled seams on the front and back, which give it grace and character.

AVAILABLE COLOURS



322 Brown

SIZE TABLES AND CORRESPONDENCES

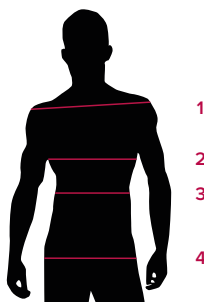


TABLE ST-E3 REGULAR FIT							
SIZE	XS	S	M	L	XL	XXL	XXXL
1 - SHOULDERS	35	36	37	38	40	42	43
2 - CHEST CIRCUMFERENCE	80-84	85-90	91-96	97-102	103-110	111-118	119-125
3 - WAIST CIRCUMFERENCE	99-83	84-89	90-95	96-100	101-108	109-116	117-124
4 - HIPS CIRCUMFERENCE	99-83	84-89	90-95	96-100	101-108	109-116	117-124

SIZE GUIDE **1)** Take the anatomical measurements (body with underwear) without tightening, keeping the measuring tape taut. Note: in case you want to wear of the gowns already with the clothing underneath take the measurements already dressed. **2)** If there is a measure between 2 sizes between the measurements taken, we advise you to take the bigger one. **3)** The measurements in the table are expressed in centimeters.

GIBLORS.COM