

**DETTAGLI**  
- Ampia tasca centrale

**COLORE**  
00 Bianco

**TESSUTO**  
65% poliestere  
35% cotone  
140 g / m<sup>2</sup>

**TAGLIE**  
XS ÷ XXXL  
Regular Fit



Le misure indicate si riferiscono alle taglie **S** per i capi femminili, **L** per i capi maschili. Per i capi a taglia unica le misure indicate sono effettive.

Realizzata in policotone, semplice, naturale e fresca, la Casacca Helena è la scelta ideale per il settore "Wellness & beauty". La chiusura ad incrocio con lacci da annodare in vita e gli spacchetti laterali per facilitare i movimenti ne fanno un capo molto elegante.

## COLORI DISPONIBILI



00 Bianco

TABELLE TAGLIE  
E CORRESPONDENZE

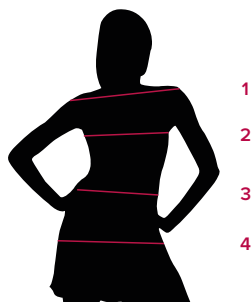


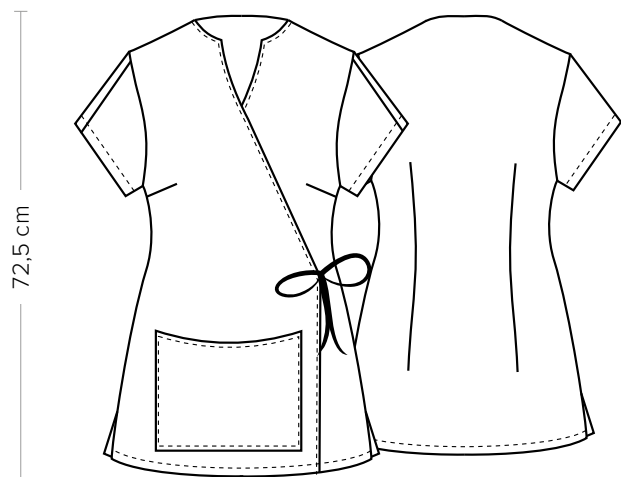
TABELLA ST-K3 REGULAR FIT								
TAGLIA	XS	S	M	L	XL	XXL	XXXL	4XL
1 - SPALLE								
2 - CIRCONFERENZA TORACE	90-93	94-99	100-105	106-111	112-119	120-127	128-135	136-145
3 - CIRCONFERENZA VITA	78-81	82-87	88-93	93-99	100-107	108-115	116-122	123-132
4 - CIRCONFERENZA BACINO	94-97	98-103	104-109	110-115	116-123	124-131	132-139	140-149

**GUIDA ALLE TAGLIE** **1)** Prendere le misure anatomiche (corpo con abbigliamento intimo) senza stringere mantenendo ben teso il metro. Nota: nel caso vogliate indossare dei camici già con dell'abbigliamento sotto prendete le misure già abbigliati. **2)** Nel caso tra le misure prese vi fosse una misura a cavallo fra 2 taglie vi consigliamo di prendere quella più grande. **3)** Le misure della tabella sono espresse in centimetri.

# HELENA

ITEM CODE  
1590

**Giblor's**  
italian work/life specialist



## DETAILS

- Full central pocket

## COLOURS

00 White

## FABRIC

65% polyester  
35% cotton  
140 g / m<sup>2</sup>

## SIZES

XS ÷ XXXL  
Regular Fit



The measures indicated refer to sizes **S** for women, **L** for men. For one-size-fits-all garments, the measurements indicated are effective.

Made of poly-cotton, simple, natural and fresh, the Helena Tunic is the ideal choice for the "Wellness & beauty" sector. There crossover closure with laces to tie at the waist and side vents to facilitate movement make it a very elegant garment.

## AVAILABLE COLOURS



00 White

## SIZE TABLES AND CORRESPONDENCES

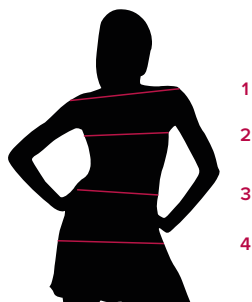


TABLE ST-K3 REGULAR FIT								
SIZE	XS	S	M	L	XL	XXL	XXXL	4XL
1 - SHOULDERS								
2 - CHEST CIRCUMFERENCE	90-93	94-99	100-105	106-111	112-119	120-127	128-135	136-145
3 - WAIST CIRCUMFERENCE	78-81	82-87	88-93	93-99	100-107	108-115	116-122	123-132
4 - HIPS CIRCUMFERENCE	94-97	98-103	104-109	110-115	116-123	124-131	132-139	140-149

**SIZE GUIDE** **1)** Take the anatomical measurements (body with underwear) without tightening, keeping the measuring tape taut. Note: in case you want to wear of the gowns already with the clothing underneath take the measurements already dressed. **2)** If there is a measure between 2 sizes between the measurements taken, we advise you to take the bigger one. **3)** The measurements in the table are expressed in centimeters.

**GIBLORS.COM**